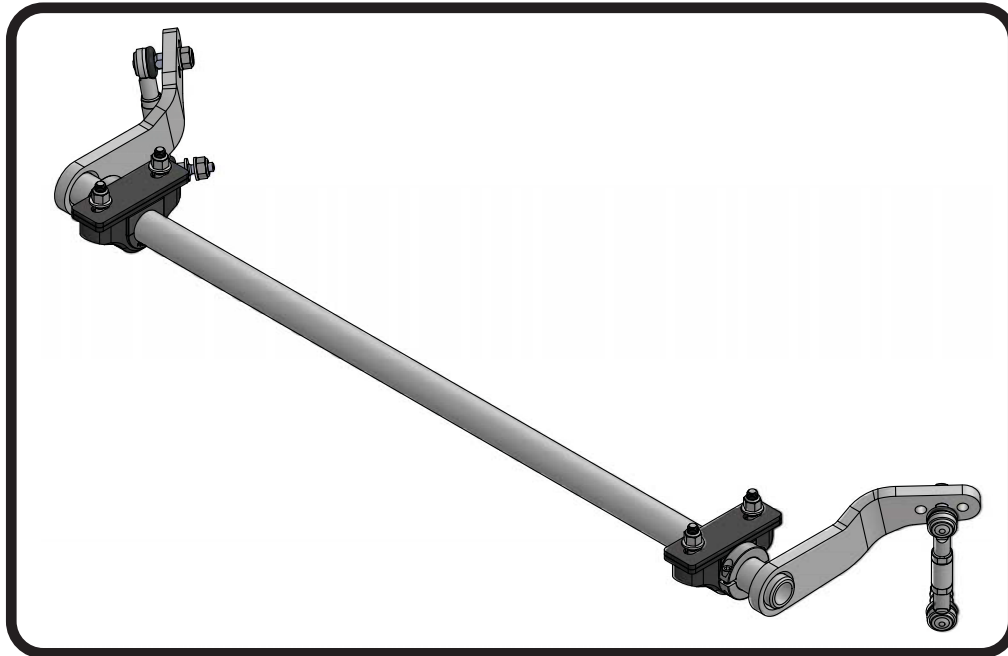


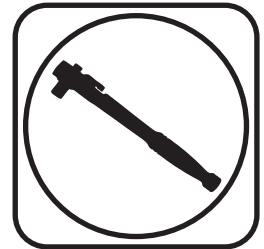


**Part # 11539101**

**1963-1967/1968-1982 C2/C3 Corvette Front Sway Bar**



Recommended Tools



## 1963-1982 C2/C3 Front Sway Bar Installation Instructions

### Table of contents

- Page 2..... Included Components and Hardware List
- Page 3..... Getting Started
- Page 4-6..... Sway Bar Installation

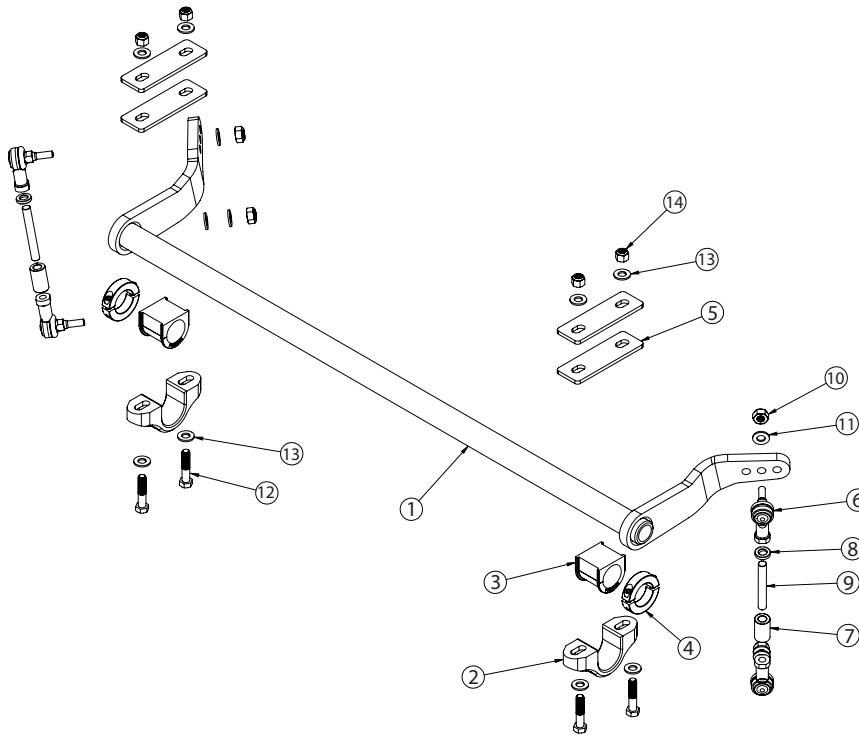
This Sway Bar is designed to be used with the Ridetech StrongArms





### Major Components .....In the box

Item #	Part #	Description	QTY
1	90003544	Sway Bar Assembly	1
2	90001343	Billet Bushing Strap	2
3	70015014	Lined Bushing	2
4	70014722	Locking Ring	2
5	90002177	Frame Bushing Spacer	4
6	90003842	10mm 90 degree elbow (Preassembled Posilink)	4
7	90002342	Posilink Spacer (Preassembled Posilink)	2
8	90002275	Crush Washer (Preassembled Posilink)	2
9	99115008	M10-1.5 75mm stud (Preassembled Posilink)	2



### Hardware List .....In the box (Kit # 99010232)

Item #	Part Number	Description	QTY
<b>END LINK</b>			
10	99112002	M10-1.5 Nylok Nut	4
11	99373003	3/8" SAE Flatwasher	6
<b>C3 BILLET MOUNT</b>			
12	99311045	5/16"-18 x 2" Hex Bolt	4
13	99313001	5/16" SAE Flatwasher	4

Item #	Part Number	Description	QTY
<b>C3 BILLET MOUNT</b>			
12	99371024	3/8"-16 x 1 3/4" Hex Bolt	4
13	99373002	3/8" SAE Flatwasher	8
14	99372001	3/8"-16 Nylok Nut	4



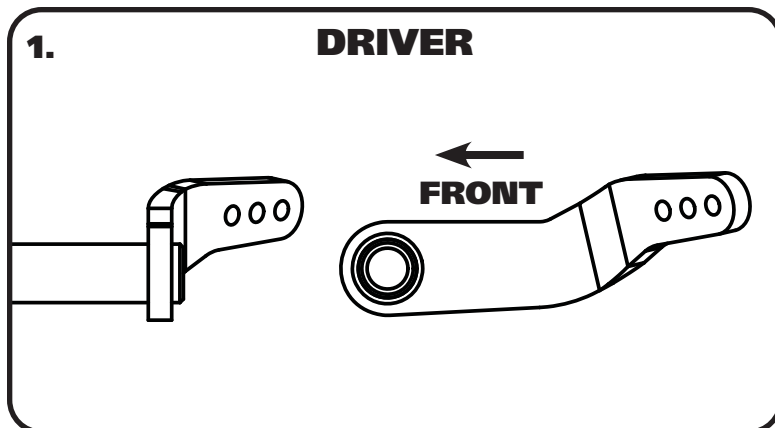
### Getting Started.....

Congratulations on your purchase of the Ridetech Front Sway Bar. This kit has been designed to give your Corvette excellent handling along with a lifetime of enjoyment. Some of the key features of this Sway Bar: Posilinks - The Posilink makes the reaction of the swaybar instantaneous, tunability - this sway bar has 3 positions to aid in the tuning of the handling of your Corvette.

**Note:** This sway bar is designed to be used with the Ridetech StrongArms.

This sway bar kit utilizes an anti-friction lining in the sway bar bushing. The lining allows the sway bar to move freely and quietly in the bushing. No lubrication is required.

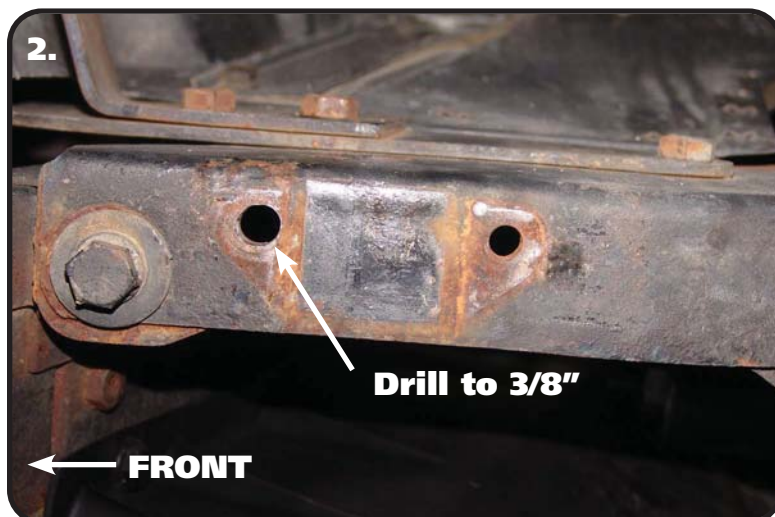
### Sway Bar Orientation



**1. Diagram 1** shows the driver's side sway bar arm. This shows a side view and front view to help you with the orientation of the sway bar in the car.

**STEPS 1 - 3 ARE FOR C2 CORVETTE ONLY, IF INSTALLING ON C3 SKIP TO STEP 4**

### C2 Frame Bushing Mounting



**2.** Drill out the forward ORIGINAL sway bar mounting hole to 3/8". The original rear hole will not be used. A new mounting hole for the rear bolt will be drilled in **Step #4**.



### C2 Frame Bushing Mounting



**3.** Insert the sway bar into position by sliding it between the bumper support and the frame rail. See **Step 1** for correct orientation. With the sway bar slid in place, install the mount bushing onto each end of the sway bar followed by the mounting strap.

**NOTE:** Approximately 1 3/8" of the bar end will be sticking out of the bushings.

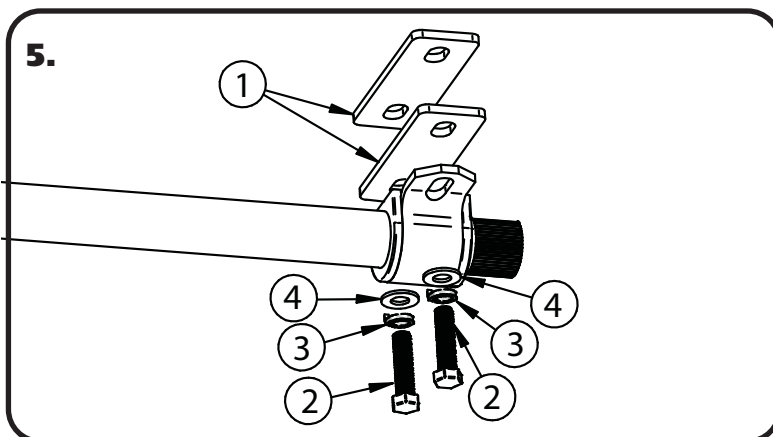


**4.** Insert a 3/8"-16 x 1 3/4" bolt and flat washer through the front mounting strap hole and hole that was drilled out in step #2. Install a 3/8" flat washer and nylok nut on the bolt and lightly tighten making sure the bolt stays in the center of the slot. With the bolt and nut lightly tighten clamp the loose end of the strap to the frame. With the strap clamped in place, drill a 3/8" hole in the center of the slot in the mounting strap. Repeat on other side. Install 3/8" x 1 3/4" bolt, flat washers, and nylok nut in drilled hole. **DO NOT TIGHTEN.**

**AFTER COMPLETION SKIP TO STEP 6**

### C3 Sway Bar Installation

**STEPS 5 - 6 ARE FOR C3 CORVETTE ONLY.**

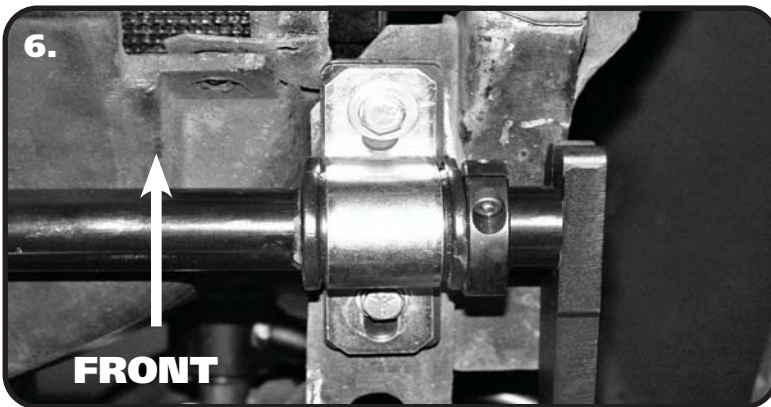


**5.** The sway bar on the C3 is bolted into the OEM sway bar position. The C3 uses spacers(1) to position the bar correctly on the chassis. These spacers are installed in between the bushing assembly and the frame. Insert a 5/16"x 2" bolt(2), 9/16" lock washer(3), and 5/16" flat washer(4) through each slot in the bushing mount. Install the 2 spacers(1) on the bolt before threading it into the factory sway bar mounting hole in the frame. **DO NOT TIGHTEN.**



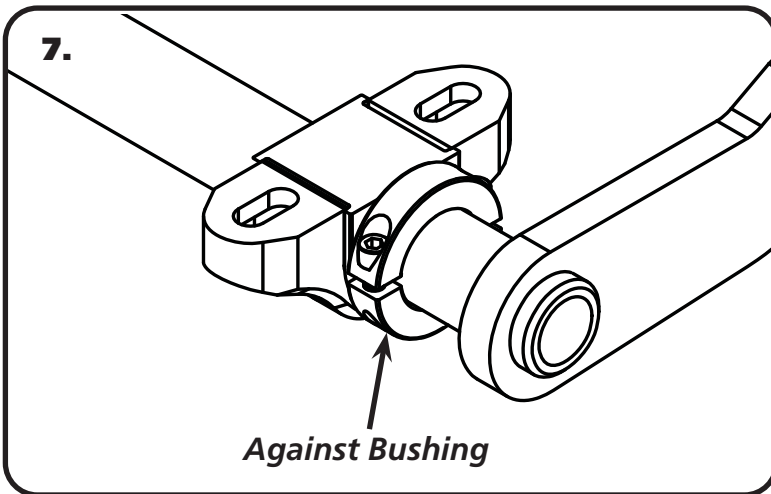
### C3 Sway Bar Installation

**STEPS 5-6 ARE FOR C3 CORVETTE ONLY.**

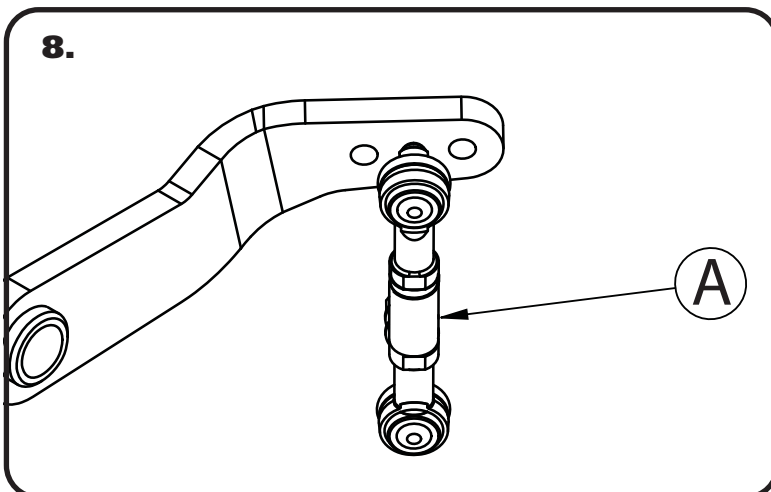


6. The sway bar will be slid to the rear of the car when doing final tightening of the bushing mounts.

### ALL CORVETTES Sway Bar Installation



7. Install locking ring onto sway bar. **DO NOT TIGHTEN.** With all 4 bolts installed, center the sway bar in the bushings. There should be approximately (1 3/8" - C2) (1 9/16" - C3) sticking out of the bushing on each side. With the sway bar centered, slide the locking rings up against the bushings and tighten them down. Tighten the bushings mounting hardware. Torque C2 (3/8") hardware to 35 ft-lbs. Torque C3 (5/16") hardware to 17 ft-lbs.

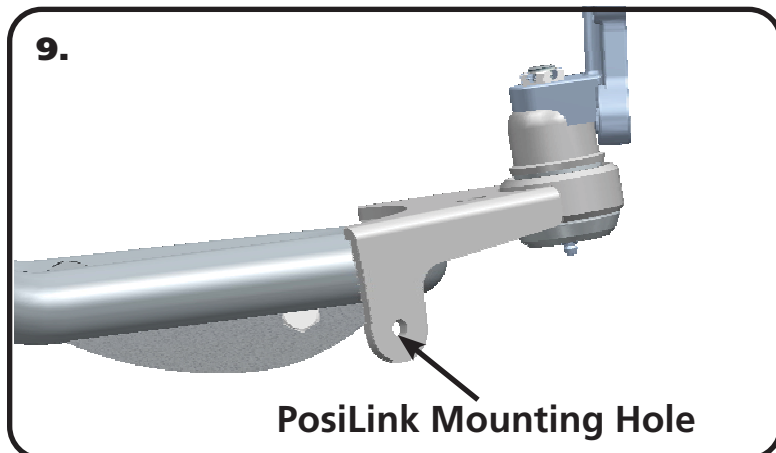


8. Install the Posilink (A) into the center hole on the sway bar arm using **Diagram #8** as a reference. Tighten using a 3/8" flat washer on each side of the arm and a 10mm Nylok nut. Torque the 10mm nut to 37 ft-lbs.

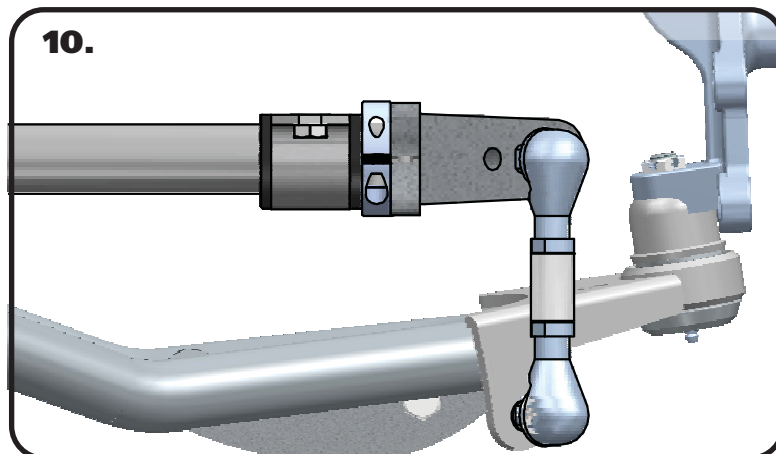
**NOTE:** Driver and Passenger are installed in the same orientation. For the Passenger side, you will simply spin the Posilink over 180 degrees.



### Sway Bar Installation



**9.** Image 9 shows the PosiLink mounting hole on the lower StrongArm.



**10.** With the arms installed on the sway bar, install a 3/8" flat washer on each side of the tab along with a 10mm nylok nut onto the PosiLink. Torque the 10mm nut to 37 ft-lbs.

**11.** Double check all hardware to make sure its tight.

The sway bar has 3 positions to aid in the tuning of your Corvette's handling. We start in the center position and tune from there. The position to the front of the car shortens the arm and will make the sway bar stiffer. The position to the rear of the car lengthens the arm and will make the sway bar softer.