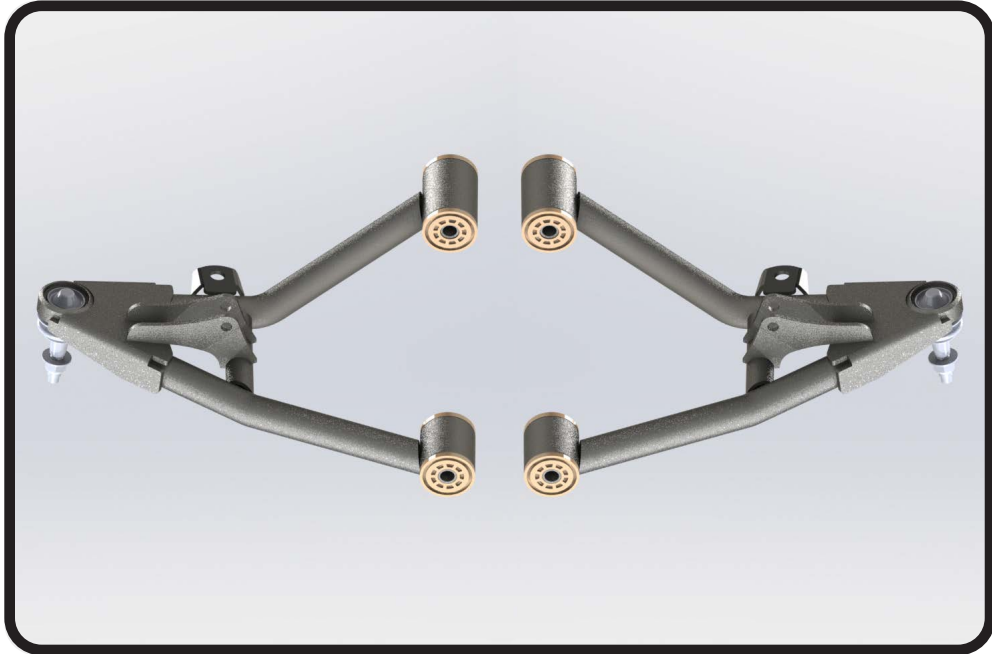




Part # 11702899 - 2007-2013 Silverado Front Lower StrongArms



Recommended Tools



**2007-2013 Silverado Lower StrongArms
Installation Instructions**

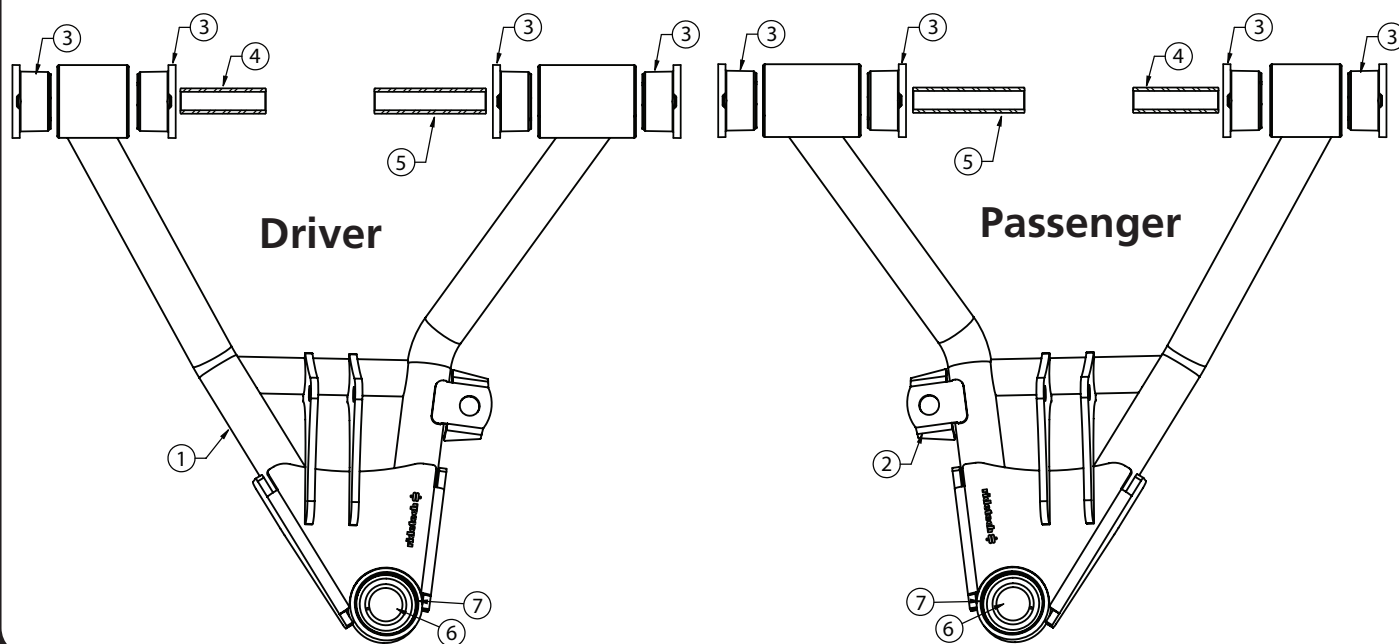
Table of contents

- Page 2..... Lower Control Arm Components & Getting Started
- Page 3..... Lower Control Arm Installation
- Page 4..... Lower Control Arm Installation
- Page 5..... Lower Control Arm Installation & Alignment



Upper Control Arm ComponentsIn the box

Item #	Part Number	Description	QTY
1	90001423	Driver Lower Control Arm	1
2	90001424	Passenger Lower Control Arm	1
3	70010755	Delrin Control Arm Bushing	8
4	90001427	Delrin Bushing Inner Sleeve, .875" OD x .645" ID x 2.952"	2
5	90001428	Delrin Bushing Inner Sleeve, .875" OD x .645" ID x 3.858"	2
6	70015097	Lower Ball Joints - Proforged # 101-10334	2
7	70015160	Spirolox Snap Ring - installed on ball joint	2



Getting Started.....

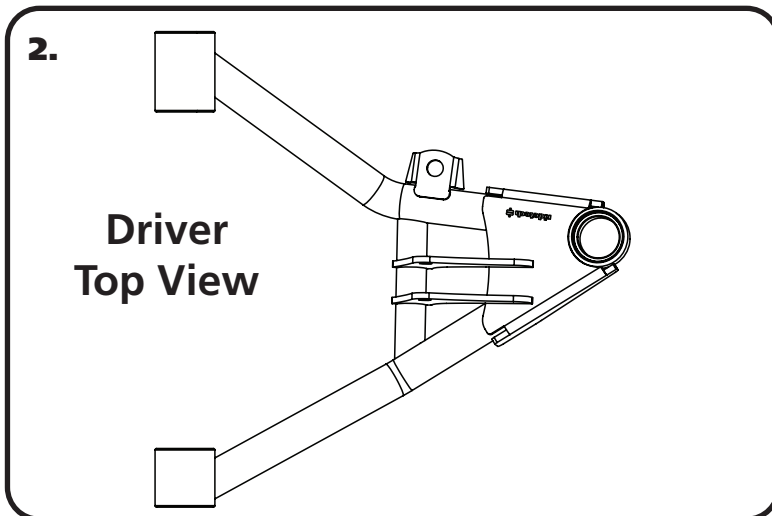
Congratulations on your purchase of the Ridetech 07-13 Silverado StrongArms. These StrongArms have been designed to give your Silverado excellent handling along with a lifetime of enjoyment. Some of the key features of the StrongArms: Ball Joint angles have been optimized for the lowered ride height, Delrin bushings are used to eliminate bushing deflection along with providing free suspension movement through the entire range of travel. The Delrin bushings are made from a material that is self lubricating, so no grease zerks are needed.

Installation

1. Remove the entire lower control arms from the truck. If you are replacing the upper control arms and spindle, remove them too. Refer to a Factory Service Manual for the proper method.



Lower Control Arm Installation



2. The lower control arm is attached to the factory mounts using factory hardware. The driver side arm is shown in **Figure "2"**. The sway bar tab on the control arm will be to the REAR of the control arm.



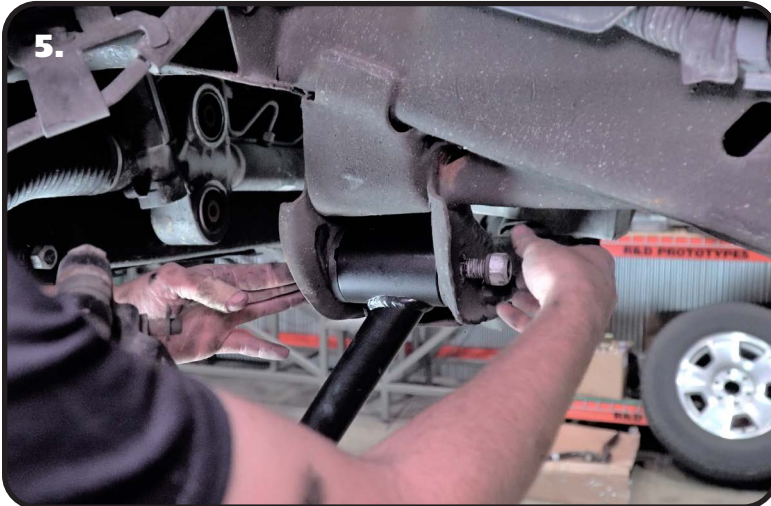
3. Insert the lower control into the OEM mounts and align the through holes of the bushing sleeves with the OEM mounting holes.



4. With the bushing sleeves aligned with the OEM mounting holes, reinstall the OEM control arm bolts.



Lower Control Arm Installation



5. Reinstall the OEM washers and nuts on the lower control arm bolts. Torque to 129 ftlbs.



6. Insert the pin of the lower balljoint into the spindle.



7. Install the ball joint nut on the ball joint pin.

Torque Specs:

Lower Ball joint - 92 ftlbs

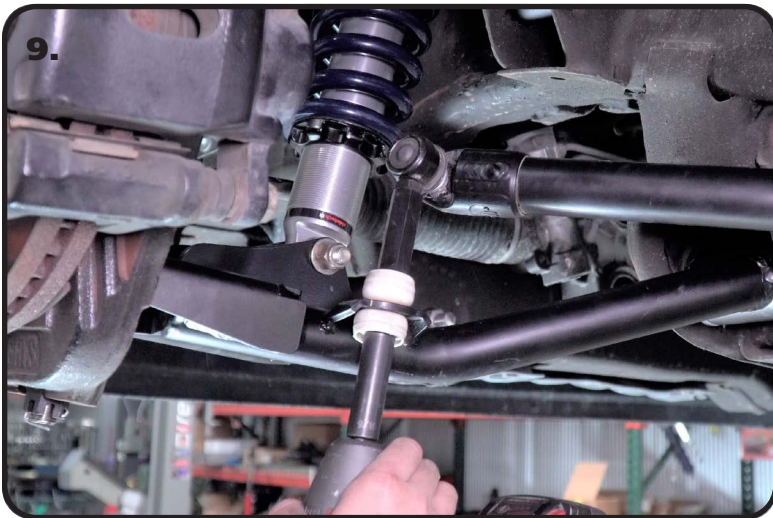
(if your ball joint is equipped with a cotter pin, tighten the castle nut to line up cotter pin hole. Next, install the cotter pin.)



Lower Control Arm Installation & Alignment



8. Install the 1/2" I.D. bearing spacers into bearing in the shock body. These spacers have a through hole that is 1/2" diameter. The small end of the spacers will insert into the shock bearing. Slide the shock with the spacers installed into the lower control arm. Raise the arm up to line up the holes in the bushing with the 1/2" hole in the control arm straps and hold it in place. You may want to put a jack under the lower control arm to help hold the control arm in position.



9. Attach the sway bar to the sway bar tab of the control arm.

10. Double check all hardware.

11. Any time you change suspension components, the front end alignment will need to be checked.

Suggested Alignment Specs:

Camber:	Street: -.5 degrees
Caster:	Street: +3.0 to + 5.0 degrees
Toe:	Street: 1/16" to 1/8" toe in